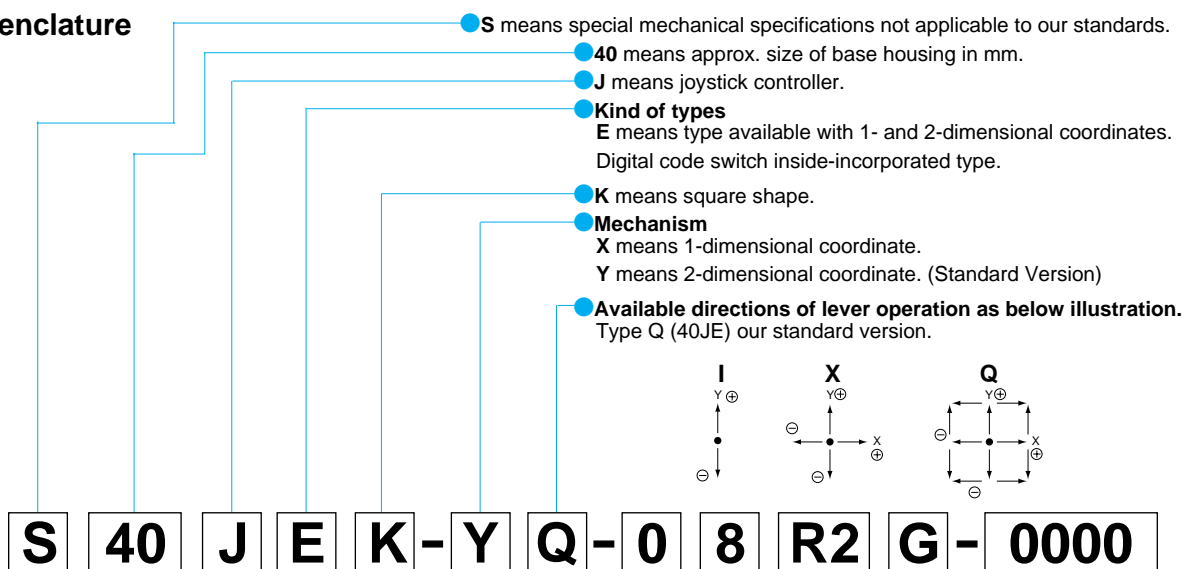


# 40JE

## Nomenclature



### Number of potentiometers to be mounted.

0...no potentiometer mounted. (No. potentiometer function available)

### Number of switches to be mounted.

7...4bit Gray Digital code switch mounted.

8...4bit Binary Digital code switch mounted.

75...5bit Gray Digital code switch mounted.

### With spring return device :

R1 : with spring return device for 1-dimensional coordinate.

R2 : with spring return device for 2-dimensional coordinate.

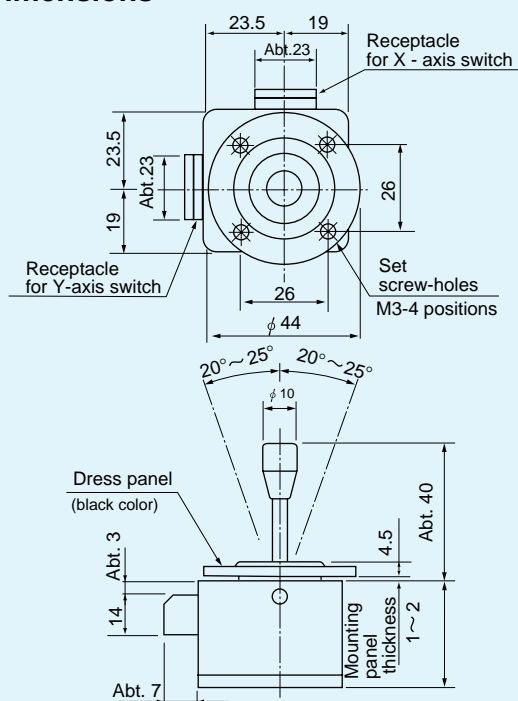
### Mounting accessories :

G : with dust proof rubber cover.

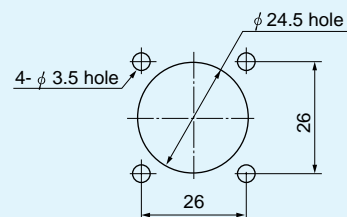
P : with sub-panel for mounting.

### Special part number basing on customer's specifications with 4 digits number.

## Standard Dimensions



## Panel Arrangements



- Note : 1) In case of type Q, the angle of mark "※" becomes 360° square-directionally and  $\pm 20^\circ \sim \pm 25^\circ$  from center position.  
 2) 4 pcs. of mounting screws (M3 X 8) are attached.

(Unit : mm)



**40JEK-YQ-07R2** (gray code)  
**40JEK-YQ-08R2** (binary code)  
**40JEK-YQ-075R2** (5bit gray code)  
 (standard)  
 (2-dimensional coordinate type)



**40JEK-YQ-07R2G** (gray code)  
**40JEK-YQ-08R2G** (binary code)  
**40JEK-YQ-075R2G** (5bit gray code)  
 (2-dimensional coordinate type)  
 with dust-proof rubber cover)

## STANDARD SPECIFICATIONS

**Model 40JE Series**  
 (Switch inside-incorporated type)

### ●Mechanical Performances

- Controlling range of operating lever :**
- 2-dimensional coordinate type : 360° and square-directionally approx.  $\pm 20^\circ \sim \pm 25^\circ$  operation from center position.
- Operating Force :** With standard automatically center returning spring return device : Approx. 0.6 ~ 3N (60 ~ 300gf)
- Operating temperature range :**  $-20^\circ\text{C} \sim +65^\circ\text{C}$
- Vibration :** 10 ~ 55Hz 98m/s<sup>2</sup> (10G)
- Shock :** 294m/s<sup>2</sup> (30G)
- Life expectancy :** Approx. 5,000,000 operations
- Mass :** Approx. 180g

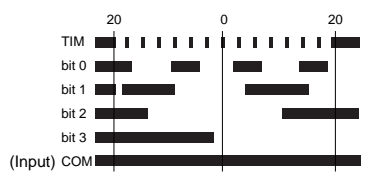
### ●Electrical Performances

- Switches used :** Rating 12V.D.C. below 1mA
- Contact resistance :** Below 300mΩ
- Dielectric strength :** 1 minute at 500V.A.C.
- Insulation resistance :** Over 100MΩ at 250 V.D.C.

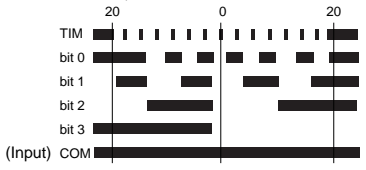
### ●Pattern of Digital Code Switch

When ordering, please specify on which you require gray code or binary code.

#### 4 bit gray code 40JEK-YQ-07R2

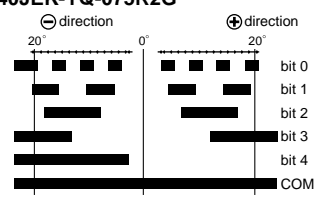


#### 4 bit binary code 40JEK-YQ-08R2

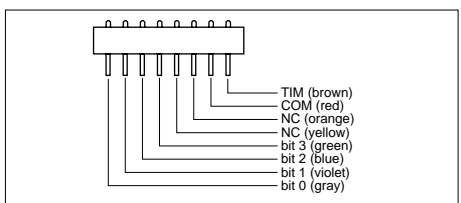


Note : In case of binary code, it is necessary to use the terminal TIM output code as a conversion gate signal.

#### 5 bit gray code 40JEK-YQ-075R2G

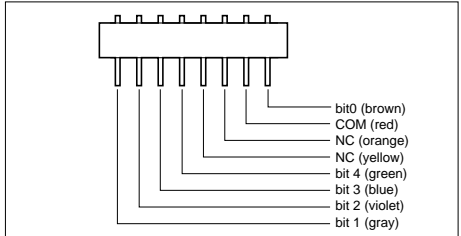


### ■Plug Connection Diagram For 4bit



- Gray code and binary code have same plug connection diagram.
- “NC” means no connection and please do not use this terminal.
- Attached plug has a leadwire of 300 mm. long (AWG28) and other length is also available on request.

### For 5bit



- “NC” means no connection and please do not use this terminal.
- Attached plug has a leadwire of about 300 mm. long (flat cable:AWG28) and other length is also available on request.

### ●Special Specifications Available

Please see page 41, a table of “Standard and Special Specifications Available”.